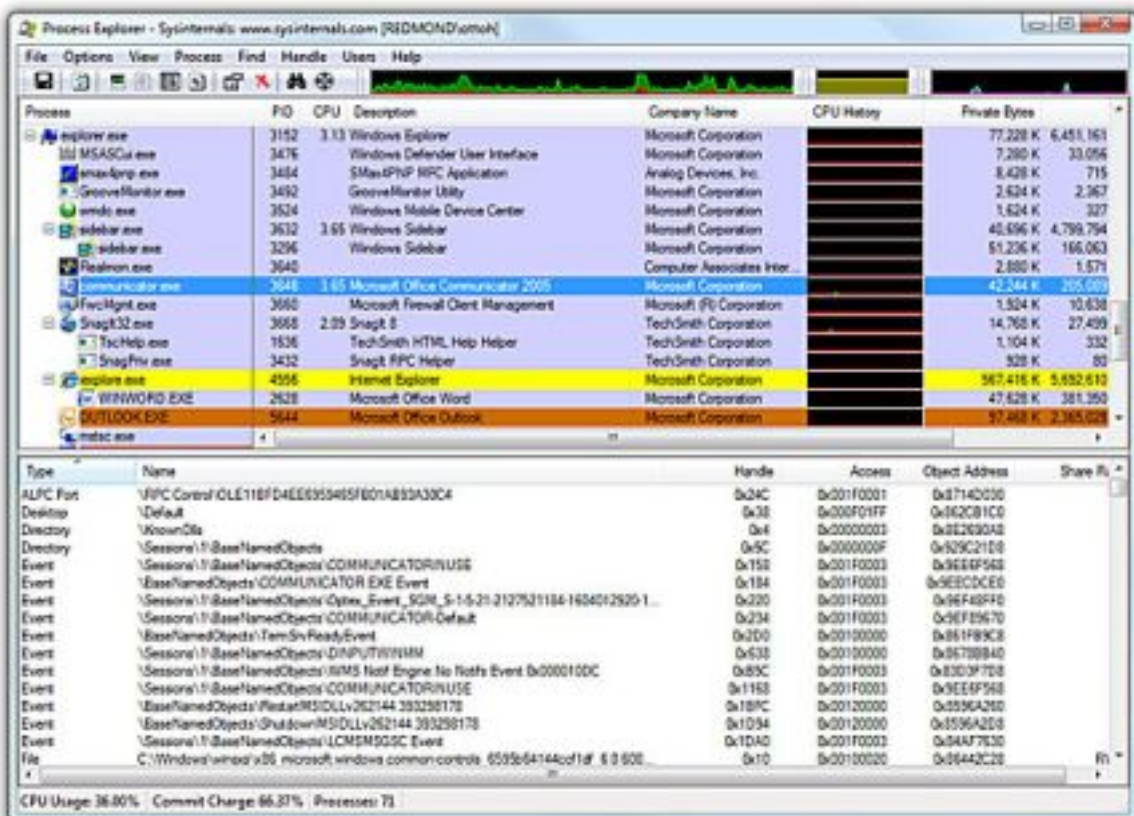


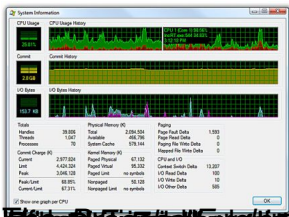
Have you ever noticed your computer is running slow and could not figure out why. Sometimes you can bring up the task manager and see what process is taking all of your systems resources, sometimes you can not. It can be very frustrating at times and you have to hunt and poke to figure out what is wrong. To help with this there is a free program you can get from Microsoft called Process Explorer. This is basically a souped up version of the task manager that is much more configurable and offers many more options.

The unique capabilities of *Process Explorer* make it useful for tracking down DLL-version problems or handle leaks, and provide insight into the way Windows and applications work.



Great Tool for troubleshooting Windows

Monday, 08 February 2010 19:13



Great Tool for troubleshooting Windows