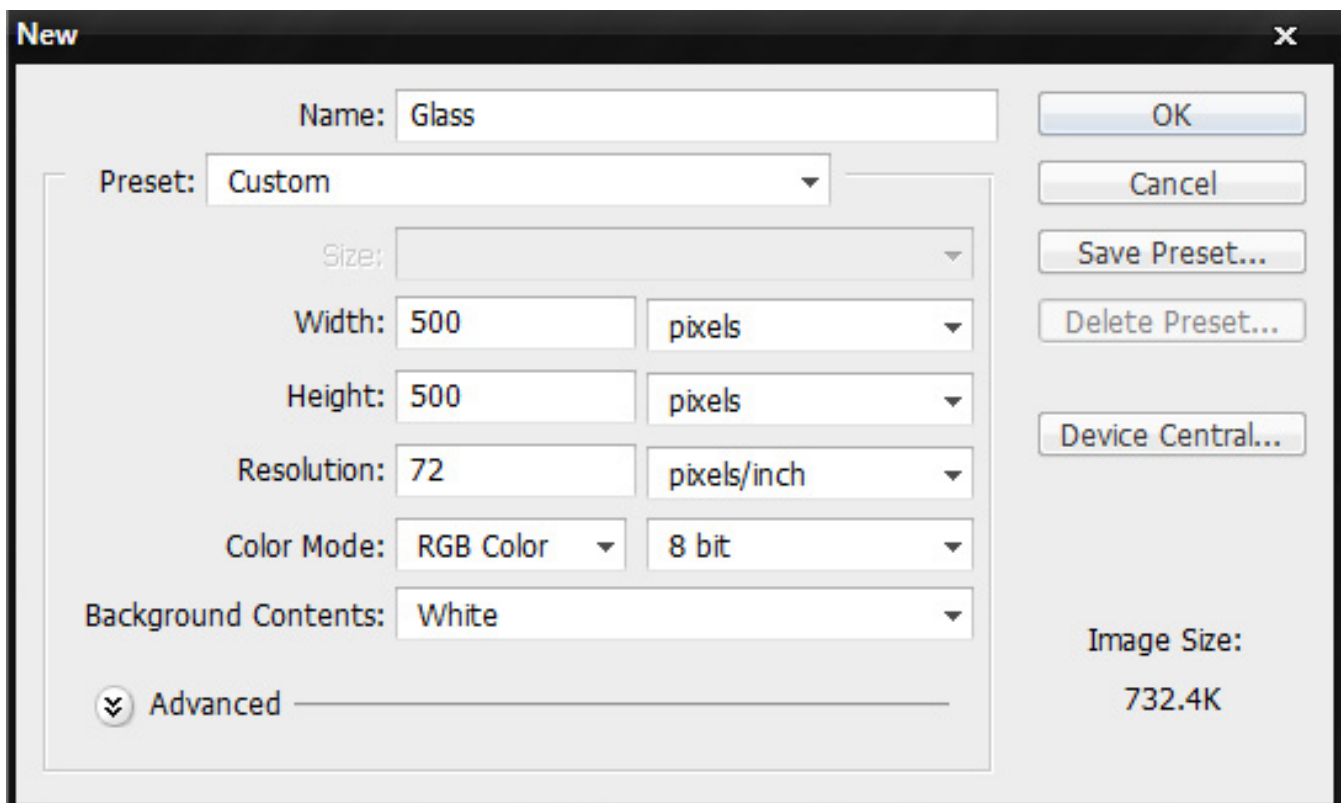


How to make the “Aero” glass effect in Photoshop.

Thursday, 19 November 2009 16:31

Today I will be showing you how to make the “Aero” glass effect in [Adobe® Photoshop® CS4](#).

1) Start off with a new document. (File> New) I am going to make the size 500x500, but feel free to make it what you want.





2) “Unlock” the background layer. You can do this by holding “ALT” and double clicking on the background layer.


3) Find a image for our back ground. I will use a flower picture.

How to make the “Aero” glass effect in Photoshop.

Thursday, 19 November 2009 16:31

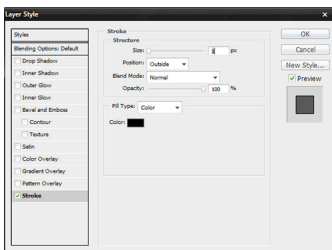
4) Use the rectangle tool () now just make a rectangle the size you want. NOTE: If you want a perfect square hold shift as you drag the shape out.

5) Make it white (Hex code #FFFFFF). ()

6) Change the fill to 11%. Using this button 

7) Open the layer styles and change these settings.(Double click on the layer, to open the layer styles box)

Stroke > 1px> color black (Hex code #000000).



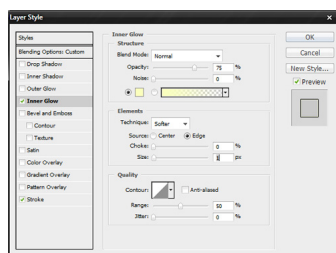
You should get something like this.

How to make the “Aero” glass effect in Photoshop.

Thursday, 19 November 2009 16:31



Inner glow > blend mode overlay > Opacity 75% > Noise 0% > Color white (Hex code #ffffff).



You should get this.



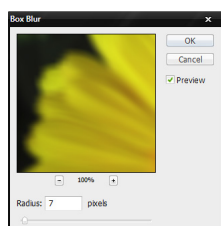
How to make the “Aero” glass effect in Photoshop.

Thursday, 19 November 2009 16:31

8) Select the shape you made, you can do that by holding CTRL and clicking on the thumbnail of the shape.

9) Select the background layer then go to” Filter> Blur> Box Blur”.

Use these settings, Radius: 7 pixels



That's is here is the final product.



How to make the “Aero” glass effect in Photoshop.

Thursday, 19 November 2009 16:31

